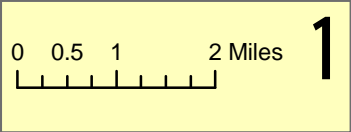
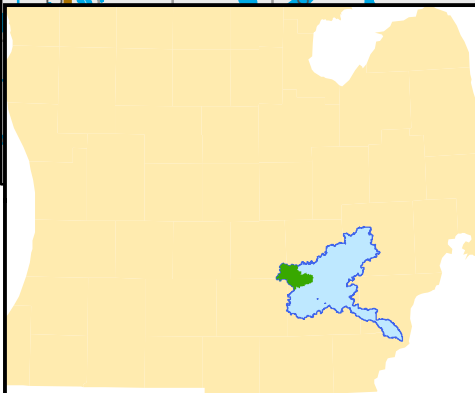
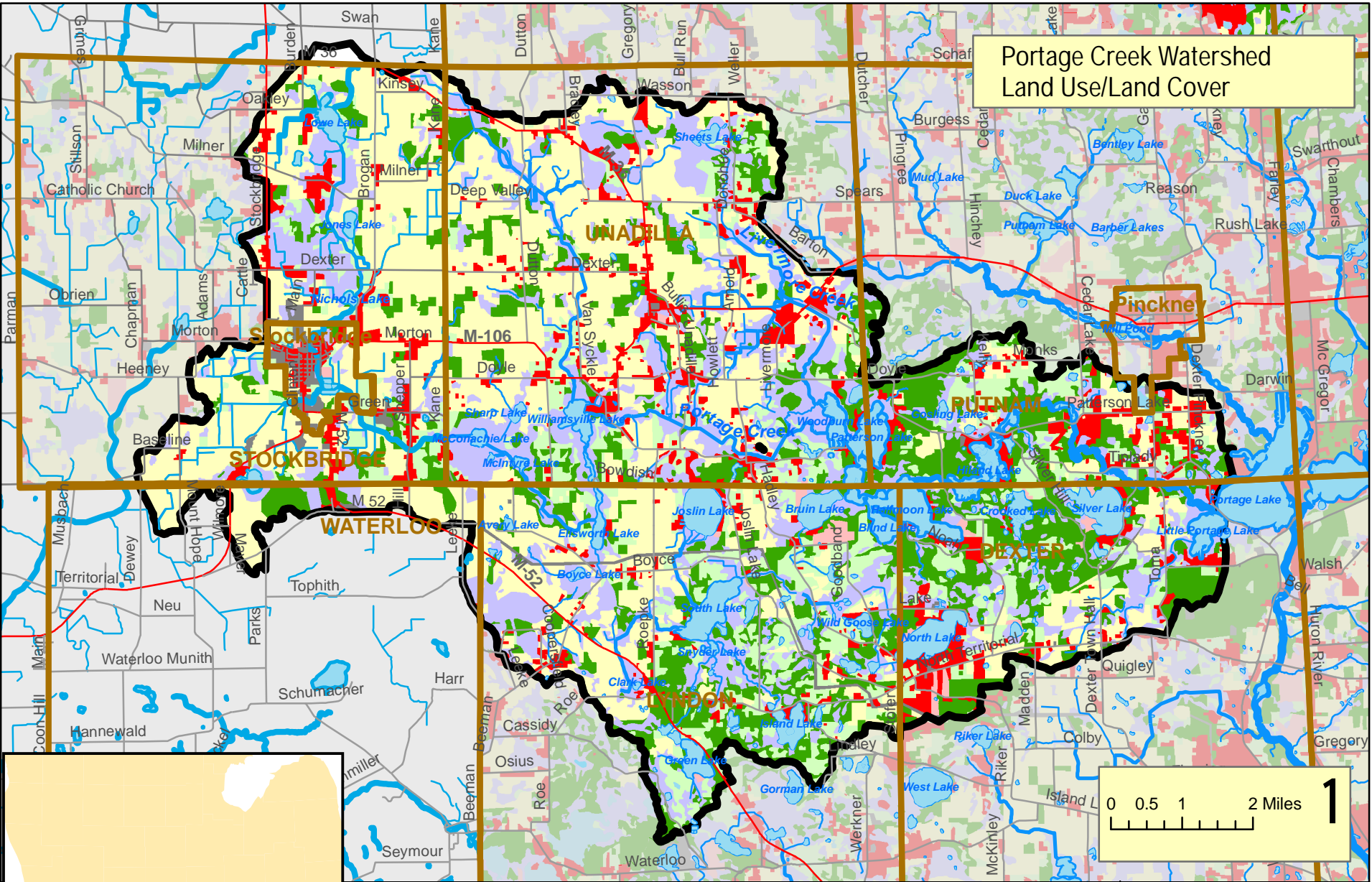


Portage Creek Watershed Land Use/Land Cover



Highways	10 acre lots	Conservation
Surface water	5 acre lots	Public
County roads	1 - 2 acre lots	Agriculture
Municipal boundaries	1/2 acre and smaller lots	Grass/shrub
	Commercial	Woodland
		Water
		Wetlands

Huron River Watershed Council

Map revised December 2008

Data Sources:
 Tri County Regional Planning Commission; township and village zoning maps; Jackson County web site; SEMCOG 2000 land use/cover data